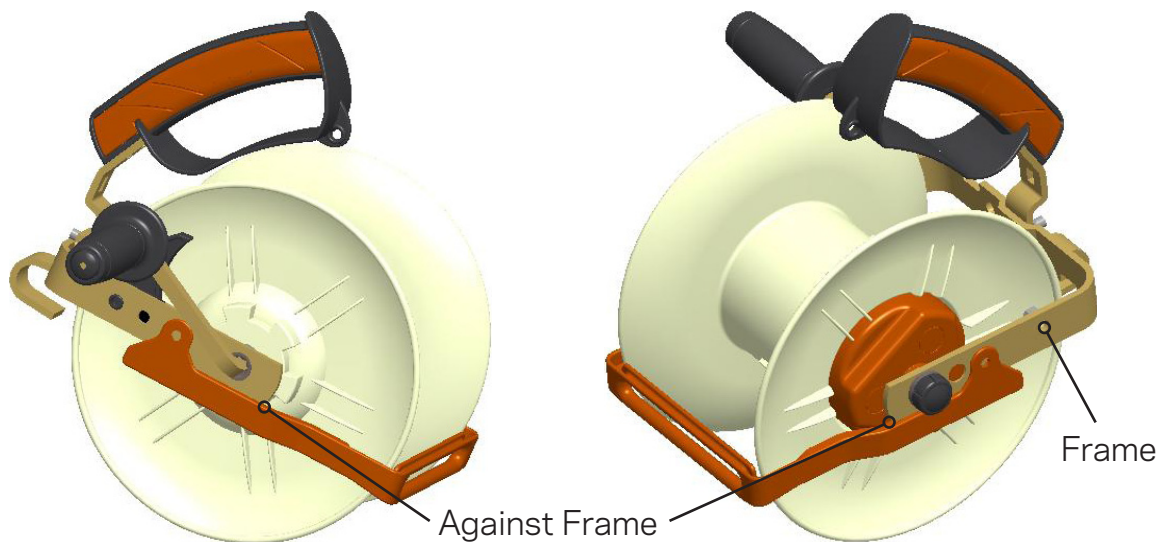


WIRE GUIDE INSTALLATION INSTRUCTIONS

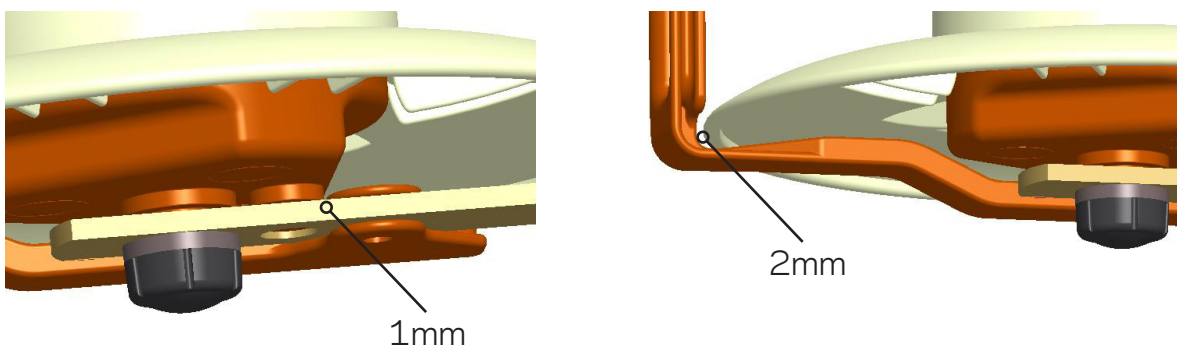
TOOLS REQUIRED:

- Drill
- 7mm Drill Bit
- Hammer
- Centre punch

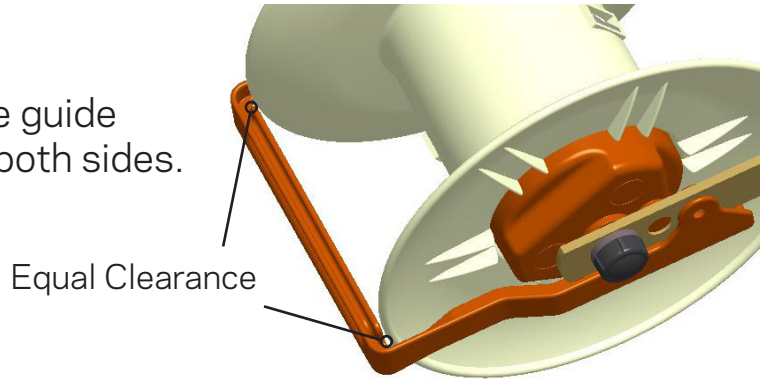
1. Slide wire guide onto the metal reel frame. Guide to be located firmly against the metal frame.



2. Approximate clearances between wire guide geared reel.



3. Clearance between wire guide and reel to be equal on both sides.

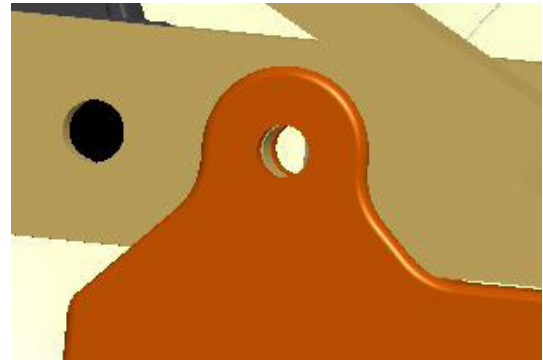


4. Hold wire guide firmly in position and mark the location of the mount holes on the metal frame.
5. Remove the wire guide.
6. Centrepunch the location of the mount hole.

IMPORTANT:
CENTREPUNCH MARKS MUST BE IN THE CENTRE OF THE MARKED HOLE TO ENSURE CORRECT FIT OF WIRE GUIDE.

7. Drill 7mm mount holes through the metal frame.

8. Mount the wire guide so the pivot holes line up with the mount holes drilled in the metal frame.



9. Press the pivot pins through the hole in the guide and frame to secure the wire guide. A light tap with a hammer may be required to fully insert the pins.

